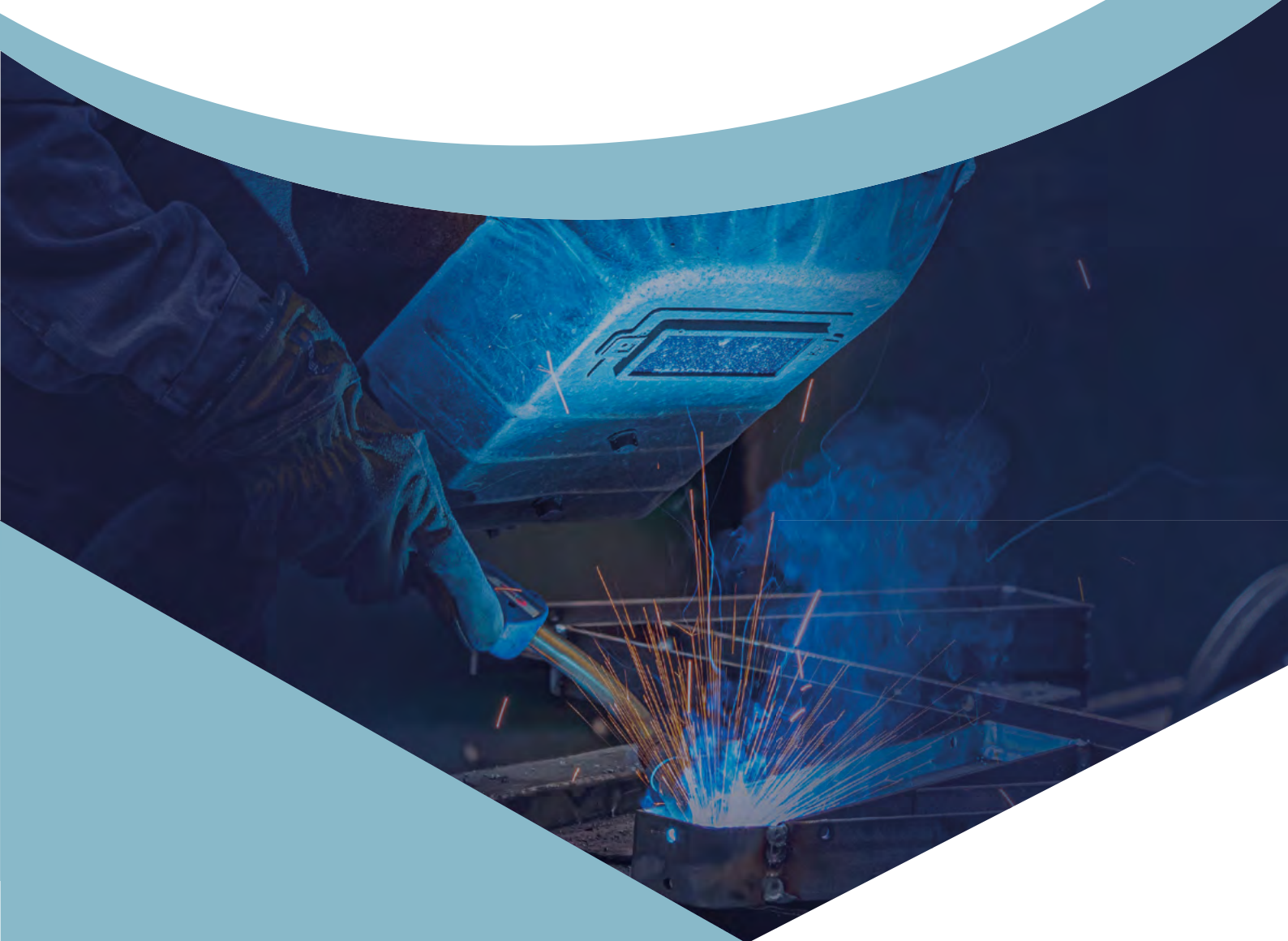


# SPECIAL STRUCTURES & FORMWORKS

EXPERTS



LEADING COMPANY IN THE MANUFACTURE OF  
FORMWORK AND STEEL CUSTOMIDES STRUCTURES  
SINCE 1984.

## HISTORY

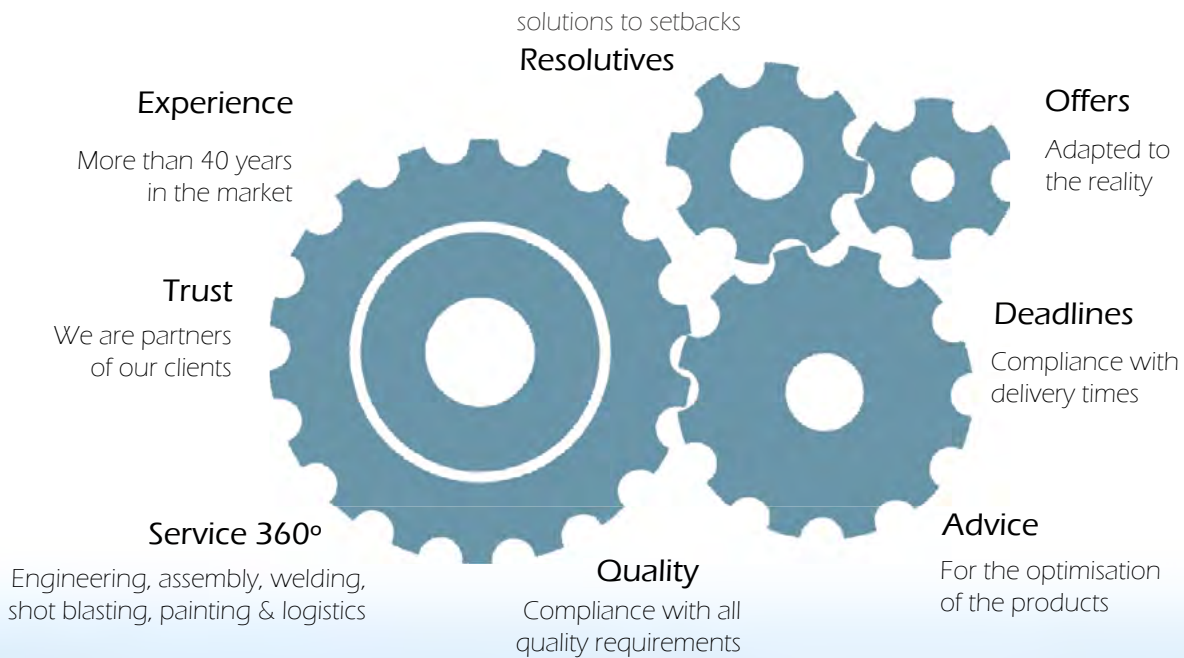
### OUR HISTORY BEGAN IN 1984

Values as mutual help, responsibility, democracy, equality, equity, solidarity and quality are the main piers where Caldibe is supported.

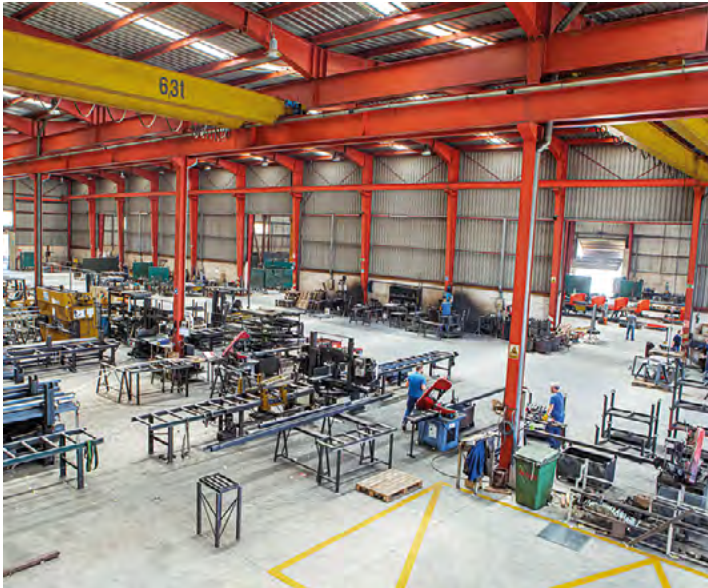
**Our mission is being better everyday** with the help of a human force that shares the passion for the well done work.



### WHAT WE OFFER TO OUR CLIENTS



## FACILITIES



We have **5000m2** for the preparation of the **material** and the development each production phase. We do the **entire manufacturing process** of the project from cutting, assembly, welding, painting and including shot blasting.

We have a **qualified team in constant training**, specialized with the latest techniques in the market.

Our philosophy is a **well done job** and our clients prove it



We are experts in the manufacturing of formworks and steel special structures. We carry out projects of any size and difficulty. Our technical team could advise you if you require.

ENGINEERING

ASSEMBLY

WELDING

PAINTING &  
SHOT BLASTING



We understand the reality of today's companies, it is possible that last minute **emergencies arise** and quick **solutions are required**. We are used to these situations and **we know how to solve them**.

After more than 30 years in the sector, Caldibe presents a **high value positioning within the tailor-made formworks and steel structures**.



# MACHINERY



## ESSENTIAL MACHINERY

- We have 20 semi-automatic MIG/MAG welding machines.
- 4 Hydraulic punching machines of 90 and 110 tons.
- 5 Band Saws.
- 3 Bending
- Machinery for the transformation of steel.

## SPECIAL MACHINERY

- 2 High definition plasma
- 2 roller hydraulic cylinder
- CNC drilling center
- Shot blasting machine (SA 2 1/2) for treatment by impact with which an excellent degree of surface preparation

## LIFTING EQUIPMENT

Self propelled crane of 40 tons and bridge cranes with capacity up to 12Tn.  
Indispensable equipment for both material loading and mobility.



# SERVICES

We manufacture all types of formworks and steel structures beyond of the conventional patterns.

Some of our products



[TUNNELS & GALLERIES](#)



[PIERS & CAPITALS](#)



[TRANSPORTING CARRIERS](#)



[CURVED / CUSTOM STRUCTURES](#)



[SPECIAL STRUCTURES](#)



[SPECIAL WORKS](#)



[OUR PRODUCTS](#)

# TUNNELS

[Back to main menu](#)



We manufacture complete formwork solutions for the tunnel lining or a specific section of it.

Here is a sample of several national and internacional projects

- ▶ EDMONTON LINE SECTION - CANADA
- ▶ KLOKOVA TUNNEL - GREECE
- ▶ ZVEROTICKY TUNNEL - CZECH REP.
- ▶ CHURRIANA TUNNEL - SPAIN
- ▶ DESPEÑAPERROS TUNNEL - SPAIN



## Englington Crosstown Train Tunnel

It is a light rail train 19km long, **10km of which are subway.**

Caldibe manufactured the formwork used for part of the route.

Year: **2018**

Engineering developed by client (Peri SAU)



## Zveroticky Tunnel

The tunnel lining consists of 37 reinforced concrete purlins, a large-scale **project** weighing 47 tonnes and 3m high.

Year: **2020**

Engineering developed by client (Peri SAU)



# GALLERIES

[Back to main menu](#)

## O CAÑIZO GALLERY

This formwork was used to manufacture a gallery in the O'Cañizo tunnel, belonging to the high-speed line to Galicia.

Year of manufacture: **2016**

Engineering developed by client (Peri SAU)



## BY PASS GALLERY (UNDURRAGA DAM)

Year of manufacture: **2016**

Engineering developed by client (Secozam S.A)



## FOLLOW LINE GALLERY

The Follow Line project consisted of the construction of **two twin tunnels** between the cities of Oslo and Ski.

Caldibe's participation in this project was based on the manufacture of the formwork used for the lining of the **connection galleries** between these tunnels, including the carrier for moving them.

Year : 2018

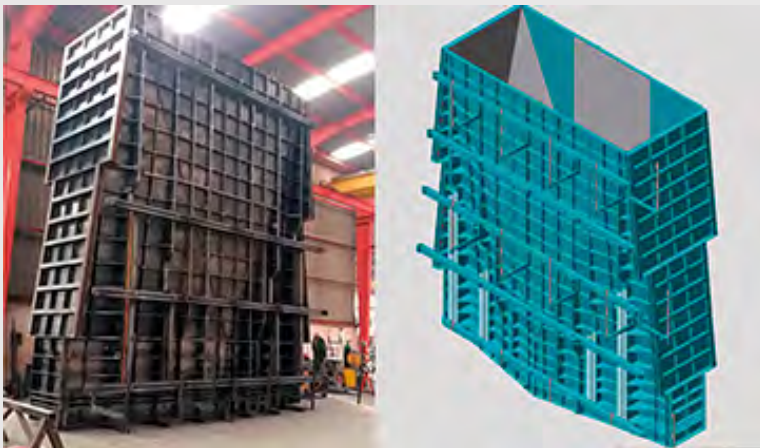
Engineering by client (Peri SAU)

# PIERS

[Back to main menu](#)

Vertical pier formworks could be manufactured in any shape. Their design and quality, both of the materials and the production of the formwork itself, must be very meticulous for the success of the project.

- ▶ MONTABLIZ VIADUCT - CANTABRIA
- ▶ III MILENIO BRIDGE - ZARAGOZA
- ▶ HIGH SPEED TRAIN PIER - FRANCE
- ▶ MOULAY HASSAN BRIDGE - MOROCCO
- ▶ ARCHIDONA VIADUCT - MALAGA



## Masnedsund pier

It's made of steel with anti-rust primer. The wide variety of elements that make up a formwork of this magnitude implies a very difficult execution process.

Year: **2017**

Engineering developed by client (RSB)



## The 1812 Constitution Bridge

Known as the **Puente de la Pepa**, it is 187 meters high and **3 km** long, of which almost 1.5 km is over water. **It is made up of 37 piers**, the main ones on which the bridge hangs are 12 and 13.

Year: **2009**

Engineering developed by client (Peri SAU)



# CAPITALS

[Back to main menu](#)

## MERSEY GATEWAY CAPITALS

It's located in the city of Manchester connecting Runcorn and Widnes (Cheshire). This work is part of a larger project, aimed at improving the infrastructure of the river Mersey crossings.

Year of manufacture: **2015**

Engineering developed by client (Teco zam)



## GRIMALDO CAPITALS

It has a length of 6.4km with 4 viaducts whose piers are the most characteristic elements of the work.

Year: **2016**

Engineering by client (Teco zam)



## SANT BOI DE LLOBREGAT CAPITALS

It's 870 metres long and forms part of the Madrid-Zaragoza-Barcelona-France high-speed railway line.

**This viaduct** have a first section of 340 m. with a **steel structure in the form of braces**, and a second section of 530 m. **supported by 10 piers**.

Year : 2006

Engineering by client (PERI SAU)

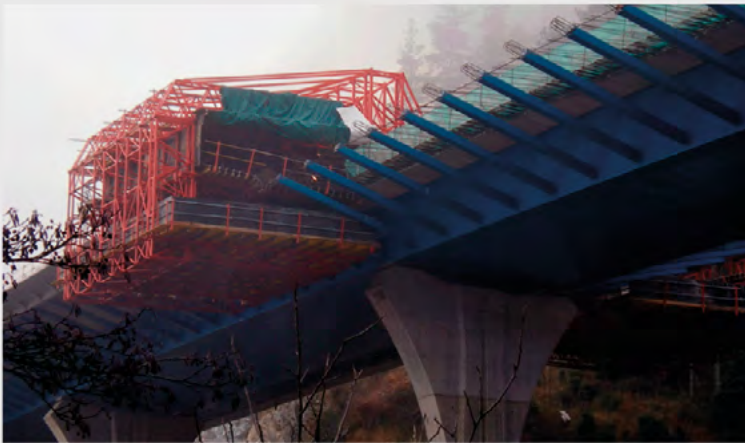


# TRANSPORT CARRIERS

[Back to main menu](#)

We carry out the production of all types of carriers. Whether they are cantilevers, for tunnels or galleries, for scaffolding or mixed structures, the quality of our projects is a guarantee of safety and success.

- ▶ TRANSPORT CARRIERS - ALAKAN WAY VIADUCT
- ▶ TUNNELS CARRIERS - LA CANDA
- ▶ CANTILEVER CARRIER - IBAIZABAL VIADUCT
- ▶ RAIL-TRACK TRANSPORT CARRIER
- ▶ SPECIAL CARRIER - LA PEINETA STADIUM



Montabliz viaduct

Manufacture of a **cantilever carrier for the Montabliz viaduct**, the highest viaduct in Spain and the sixth highest in Europe.

Year: **2008**

Engineering developed by client (PERI SAU)

## GARE SMC - Société du Grand Paris

The construction site is located at the foot of the current Saint-Maur-Creteil RER station, With its outed walls sunk to a depth of 70 meters and platforms located at 52 meters, the future **station will be the deepest in France**.

Year of manufacture: **2022**. Engineering by client (Coffrage&QuiPAGE).





# CUSTOM STRUCTURES

[Back to main menu](#)

Our experience allows us to provide solutions **for all types of customised structures.**

A good example of this is this parapet formwork manufactured under the engineering of our client (ERSEM).

A structure requested for the execution of the Cairo underground (2020).



We can make any type of **circular section**, whatever the radius and height like this formwork with **cone-shaped trunk** (2014).



We manufacture projects that require **unconventional dimensions, shapes and geometries.**

These projects are developed under the client's technical guidelines. However, if the client needs an engineering development, Caldibe can also carry it out.

Year: **2018** Engineering by client (Betazul)





# SPECIAL STRUCTURES

[Back to main menu](#)

## TENERIFE AUDITORIUM

A climbing formwork was used for the curved sail-shaped surfaces whose deck has more than 100 metres of cantilever. Its construction process divided into two phases: **the assembly of the steel structure and the concreting of the slab lower**. A real challenge for its development.

Year of construction: 2020. Engineering by client (PERI SAU)



## CAPILLUCAS DAM

The town of Capillucas, in the province of Yauyos (Lima-Peru), has a reservoir of the same name, whose waters supply both the towns in the area and the **El Platanal hydroelectric power station**.

Under the technical guidelines of our client, **Caldibe was commissioned to manufacture the taintor gate**, specially designed for large flows.

Year of manufacture: **2022**

Engineering by client (Inhisa hidráulica SA)



For more than 30 years in the market, **we have positioned ourselves as a benchmark** in the manufacture of formwork and special structures. We can be proud that all **our clients repeat their services** with Caldibe and this is proof of the quality of our work.

Here is a sample of this:



Formwork for  
trunk-elipsoidal pier. 2014



Boot-shape formwork  
(M40-Madrid). 1996



Elbow for dam  
drainage. 2020



Formwork for  
"Morning Glory" dam. 1997



Reinforced plates for turning  
wind blades. 2010



Formwork for a pier  
bridge in Morocco. 2009



Throughout our history, we have manufactured a multitude of structures with very diverse engineering. The materials we use are mainly stainless steel and carbon steel with different finishes: painted, galvanized, zinc-coated etc



STAIRS



GONDOLAS



GALVANIZED



GATEWAYS



PRECAST BEAM



STEEL MOULDS



STAINLESS STEEL



# SPECIAL WORKS

[Back to main menu](#)

## MACHINES WITH “CE” MARKING

Manufacture of a **carrier for the placement of various stands in the La Peineta Stadium**. The design and engineering were carried out entirely by Caldibe. It incorporated 2 hoist of 6.3Tn each.



## CUSTOM-MADE-MOULDS

Manufacture of **custom shape steel mould**. Each mold has a square base with a large protrusion on each of its faces, which gives it the characteristic **prismatic shape** of this element. Specific structures used as breakwaters for embankments.



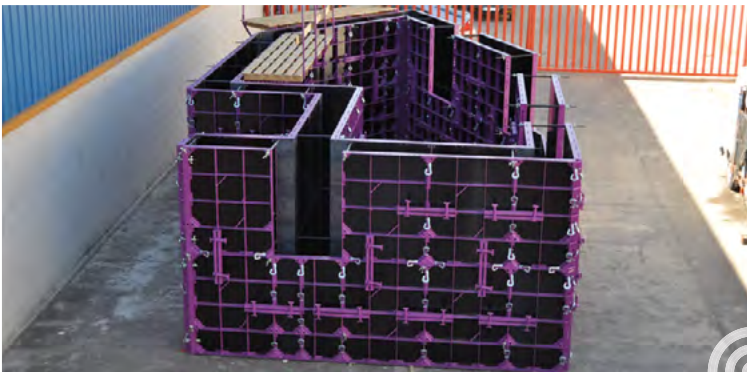
# OUR PRODUCTS

[Back to main menu](#)

## STAIRCASE MOULD

Steel moulds for the construction of concrete stairs. This formwork not only **speeds up the construction processes** but it's also adaptable to the client's needs; the length, width, height and number of steps are set to measure.

This mould is reusable. Its useful life is longer than that of other formwork, which means greater resistance and higher quality levels than other moulds.

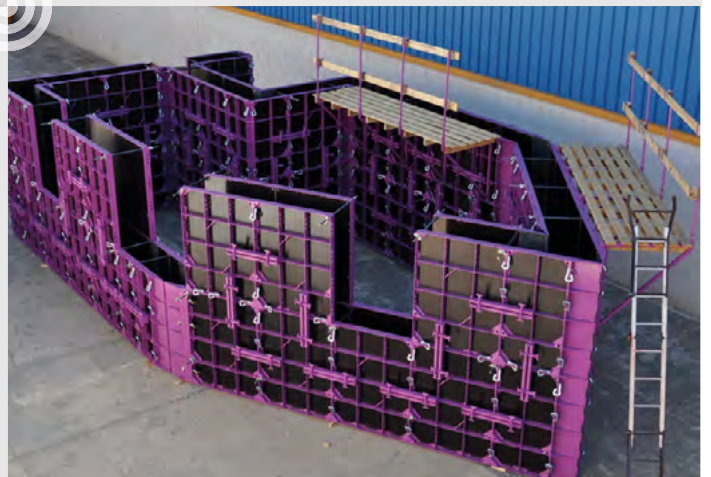


## AGILITY FORMWORK

This system is manual, adaptable, light and economical. It's offers the perfect solution to wall formwork in any dimension and geometry.

The design of its modules and elements of union, together with a limited weight and a high resistance, allow a great agility and a high performance in the execution of the work.

Thanks to its light weight, it is possible for its elements to be handled by site workers without the need for cranes or support elements.





# ENGINEERING

We have an **engineering department** that advises the client on the development of the projects if required, however, our **knowledge with regard to piles and capitals is more specialised** and many of our clients request the full development of the work.

Under some basic guidelines **Caldibe develops the project from scratch.**

An example is this pile for Scotland where the design, project calculation, manufacture and painting was entirely by Caldibe.

Year of manufacture: **2021**

Client: **Doka**

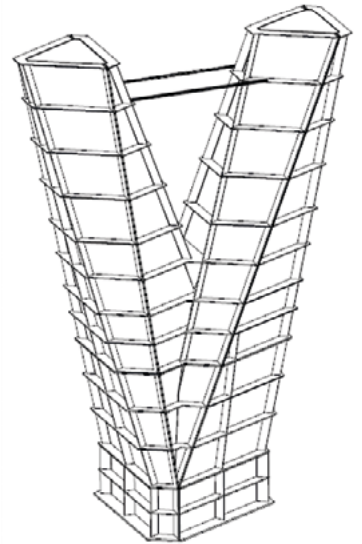


DESIGN

ENGINEERING

MANUFACTURING

PAINING





# CERTIFICATIONS



1



According to the European Directive on Construction Products, all products manufactured to be incorporated into construction works, both building and civil works, throughout the European Union's internal market must have their **CE mark** in accordance with the European reference standards. In the case of metal structures, this standard corresponds to **EN 1090**.

**Caldibe S.A.** has this accreditation as well as the **ISO 9001:2015** certification.

2



The welding processes are governed by the international requirements established in the **EN-9606, EN-15609, ISO-3834** standards.

Caldibe has its own IWE.

3



Our production processes are based on **strict quality standards** that are reflected in the final projects.

4



We are **CESOL member**; Spanish Association of Welding and Joining Technologies,



5



Our clients have the peace to know that a **job done by Caldibe** is synonymous with a **job well done**.



## WHY CHOOSE US?



### Quality:

Our production processes are governed by **strict quality standards** that are reflected in the final projects. Our clients know that a job made by **Caldibe** is synonymous with a **job well done**.

### Production:

Fulfilment of production deadlines. We have an **analysis and development** department that manages the manufacturing process by **measuring delivery times** to ensure that they are **reliable and real**.

### Experience:

After more than 30 years in the sector, Caldibe has forged a high value positioning within the formwork and metal structure market. Both in terms of meeting production deadlines, as well as standards and quality, the Caldibe brand image is a letter of introduction that is recognized and valued especially nationally and increasingly internationally.

### Resolutives:

We **provide answers to all engineering** needs, without dimensions limits. Whether simple structures or highly complex work, **we develop all type of projects**.



## **CONTACT**

+34 633 968 185

+34 916 094 784

[info@caldibe.es](mailto:info@caldibe.es)

[www.caldibe.com](http://www.caldibe.com)

[special-formworks.com](http://special-formworks.com)